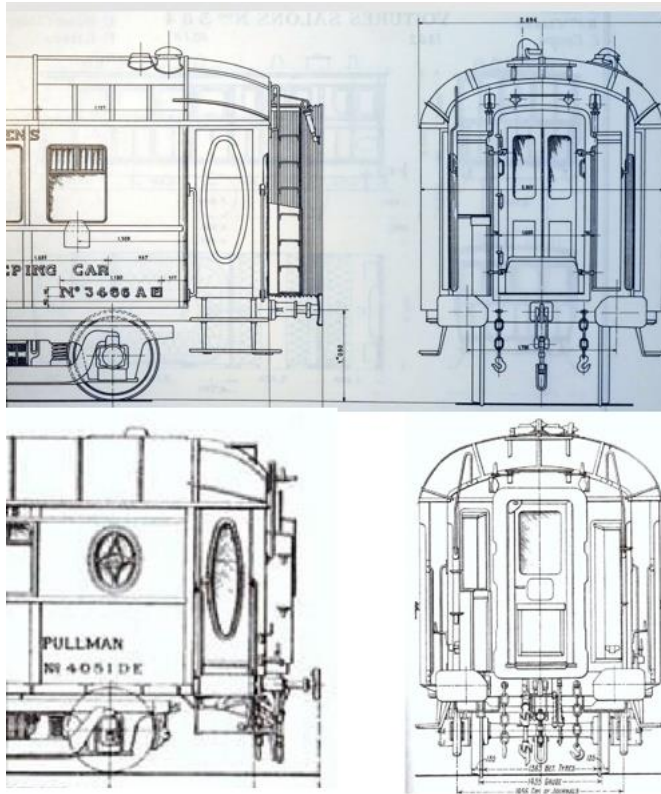


## English roofs on CIWL cars

Triggered by an announcement on a French Gauge 0 forum about modifying a model made by the USA model train company MTH of a FdO WP to make it more prototypical (including an English roof), I thought I'd take a look in my CIWL collection to see if there were any right or wrong models in terms of roof shape. A so called English roof was used on steel cars made in England in the twenties and early thirties. Here is a drawing of a car with (bottom) and without (top) an English roof which clearly shows the difference:



To find out whether models are correct, you obviously first need to know which cars had the English roof. I've created this next list of cars with English roofs based on the "Etat Numerique CIWL" brochure and further comment that WL LX and WL Y did not have an English roof even when they were made in England.

Sleeping cars: 2641-2680 (WL S2), 2918-2942 (WL S1), 3416-3431 (WL S1), 3432-3455 (WL SG)

Restaurant cars: 2700 (WR42), 2852-2866 (WR56), 2867-2881 (WR42), 3391-3405 (WR42)

Pullman cars: 4001-4015 (WPc FdO), 4016-4030 (WP FdO), 4051-4065 (WPc FdO), 4066-4080 (WP FdO), 4081-4085 (WPc FdO), 4086-4090 (WP FdO), 4091-4110 (WPc EdN), 4111-4130 (WP EdN)

## Gauge 1

I started this inventory looking at the large scale cars, the gauge 1 cars. Not many manufacturers made 1 gauge CIWL cars. I have cars from J&M Models and Wunder. The picture below shows three cars, the one on the left is Wunder, the two on the right are J&M Models. As you can see, the manufacturer J&M Models (sold through/on behalf of Fulgurex in the 1980s) made no distinction between the roofs. The FdO Pullman car 4018 and the CdA Pullman car 4163 have the same roof, while in reality the FdO Pullman car should have an English roof and the CdA Pullman car should not.



The much newer Wunder car at the left has, as far as I can see without comparison, an English roof, which it should have as car number 4064. I only have one Wunder car and could not find any pictures proving that Wunder made different roof shapes for its different cars until a picture was posted on the German CIWL forum showing a Wunder made model of an Italian made sleeping car with an English roof (which it should not have had).

### Gauge 0

The next size I looked at were the 0 gauge cars. I have cars from four makers: DH-Präzisionsmodelle/Teletrain, Elettren, Fulgurex and MTH.

I have only one car made by DH-Präzisionsmodelle/Teletrain. It is WR 2869 which should have an English roof. Although I cannot compare with other items from the same maker I think it is a good representation of an English roof.



Elettren scale CIWL cars (also sold via Fulgurex) are made since the early seventies. Quite a large range of car types is made, including types which should have an English roof. Although Elettren always uses the correct window layout all the roofs, apart from the difference in roof ventilators, seem to be the same; I do not recognize any English roof. The EdN car on the left should have an English roof, the CdA car on the right should not.



In the nineties Fulgurex stopped selling Elettren products and had a range of fine scale brass CIWL cars made by the company FM Models from Korea. Although these cars are more detailed than the Elettren ones they still do not show a correct English roof as can be seen in the next picture. The WR car on the left should not have had an English roof, but the FdO car on the right should. However, the roofs are the same except for the rain strips.



The US company MTH Electric Trains started around 2008 to make an European product line in 0 gauge including some CIWL car-sets in plastic. These cars look very much like enlarged H0 cars such as made by RivaRossi/Jouef. They all have the same roof, i.e. no English roof can be found on their FdO Pullman cars.

### H0 gauge

In H0 there are many manufacturers that made CIWL cars. Many of the makers of CIWL carriages in H0 are French; a couple of them are lesser known and I had to search to get examples of these in my collection; these are brands like France Trains and RMA and even lesser known like SMCF, PMP, Rateau, Martin, BLZ, FOBBI, Troby, TRAM, Antal and VB. Many of the older makers are not considered as makers of fine scale models (they would not have known about English roofs, I assume), so I will not discuss these further. I did take a closer look at France Trains and RMA, which were considered scale models at the time they were introduced. None of the cars made by France Trains were models of cars with an English roof. It would have been interesting to know whether France Trains would have made correct cars with English roofs. By surprise, all the cars made by RMA as far as I could find, of course excluding the T2 sleeping car, should have English roofs. But I could not recognise it as such. The picture shows a RMA WpC FdO (4015) in the middle, a France Trains WP CdA (4150) at the left and a RivaRossi WP FdO (4018) at the right right. The two at the right should have English roofs but have not.



Remaining H0 models to be looked at are by LS Models, RivaRossi/Jouef, Trix/Märklin.

LS Models CIWL cars are considered the best and most true to prototype in H0 gauge. They made until now only the CdA type of WP which has no English roof. But for WR's and WL's they made types with and without English roofs. The picture shows WL type SG 3452 (right) and WL type Yb 3874 (left). The SG should have an English roof, the Yb not and the picture shows the difference clearly.



And here is a picture of WR 3358 without and WR 3398 with English roof as per prototype.



Rivarossi/Jouef: since these makes are now in one company using the moulds of the former brands they are discussed as one. RivaRossi started their series of CIWL models with a trainset comprising besides a fourgon a WL LX , a WR (2871) and a WP FdO. Both the WR and the WP should have had an English roof, but did not have this. At the end of the existence as an own make, Jouef made a nicely detailed WP and WPc EdN which should have had an English roof but did not. The later and also current production of RivaRossi/Jouef introduced some extra detailing, but the English roof did not appear as can be seen in the picture of a Jouef EdN (right) and a RivaRossi CdA (left). The roofs are the same, but the EdN should be English.



Märklin/Trix never showed much interest in CIWL cars. They made, introduced by Trix long ago, some teak CIWL cars. Now they announced and introduced an Edelweiss Pullman train set including WP's CdA and WP's EdN. The Märklin version is already available but the Trix version that I ordered is yet not there. Looking at the prototype model picture below (CdA left and EdN right) it seems that the WP and WPc EdN are having English roofs.



### **The smaller gauges N and Z**

For Z gauge there is not much to tell. Only Märklin made some Z gauge CIWL cars in a set representing the NIOE. None of the cars in this set LX, WP CdA and WPc Sud Express, should have an English roof.

In N gauge there are a bit more, but still not many, CIWL cars.

Kato made a model of WpC 4013, but rebuilt as service car, and the picture compares this with a Kato LX sleeping car. As you can see, there is no English roof on 4013.



RivaRossi/Arnold also do not show an English roof. Here are a WR 2871, WpC 4008 and WL LX 3532. The two on the left should have English roofs, but there is no difference in roof form whatsoever.



## Conclusion

My comments on all of these cars are observations and not critical comments. I am interested in the history of toy trains and model trains and enjoy comparing the way different manufacturers make their products and how the products compare. Perhaps a 100% complete copy of a train item would be the end of the hobby; no manufacturer could do it better. The above shows however that roof form seems not to be looked at much by makers of model trains.

In addition, you can find pictures of all these models and many more from my CIWL collection in my free downloadable e-book: <https://snCF231e.nl/ciwl-carriages-by-fredsmall/>